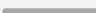
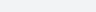




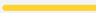


Before the installation of a Hydraloop unit, make sure that the plumbing in your building is well prepared. In this Recycle Ready Guide, you will find all necessary information to get any building Recycle Ready.

## CONTENTS

Owner Guidelines Plumbing Guidelines Colours	1
Conventional Plumbing Diagram Recycle Ready Plumbing Diagram Plumbing Options	2
Connection overview	3
Greywater Input Connections	4
System Connections Positioning Lift pump Requirements	5
Connections for Recycled Water Backup Water Wastewater	6
Water Supply Before Installation	7
Technical Drawings for your Plumber	8-9
H300 Specifications H600 Specifications	10

## LEGEND

	Greywater to Hydraloop
	Back-up water to Hydraloop
	Recycled water to toilet
	Recycled water to washing machine
	Recycled water to garden or pool
	Blackwater to sewage
	Ventilation

## OWNER GUIDELINES



### Work with professionals

The preparation of your plumbing needs to be done by a professional plumber.



### Send in the Pre-Installation Checklist

Before the installation of your Hydraloop unit, we need to make sure that the building is Recycle Ready. If the preparations are not carried out correctly and complete, this could lead to additional work and costs.

Please fill out the Pre-Installation Checklist with your plumber, sign it, and send it to your installer at least one week before the installation date.



### Check your local regulations

Before starting your project, please check the local regulations for recycled water re-use.

## PLUMBING GUIDELINES



### Input Connections

Do not connect water sources that contain grease, food scraps or waste. **No sink, kitchen sink, dishwasher or floor drain.**

Do not connect a washing machine without owner having purchased the Washing Machine Water Recycle Option (WMR).



### Output connections

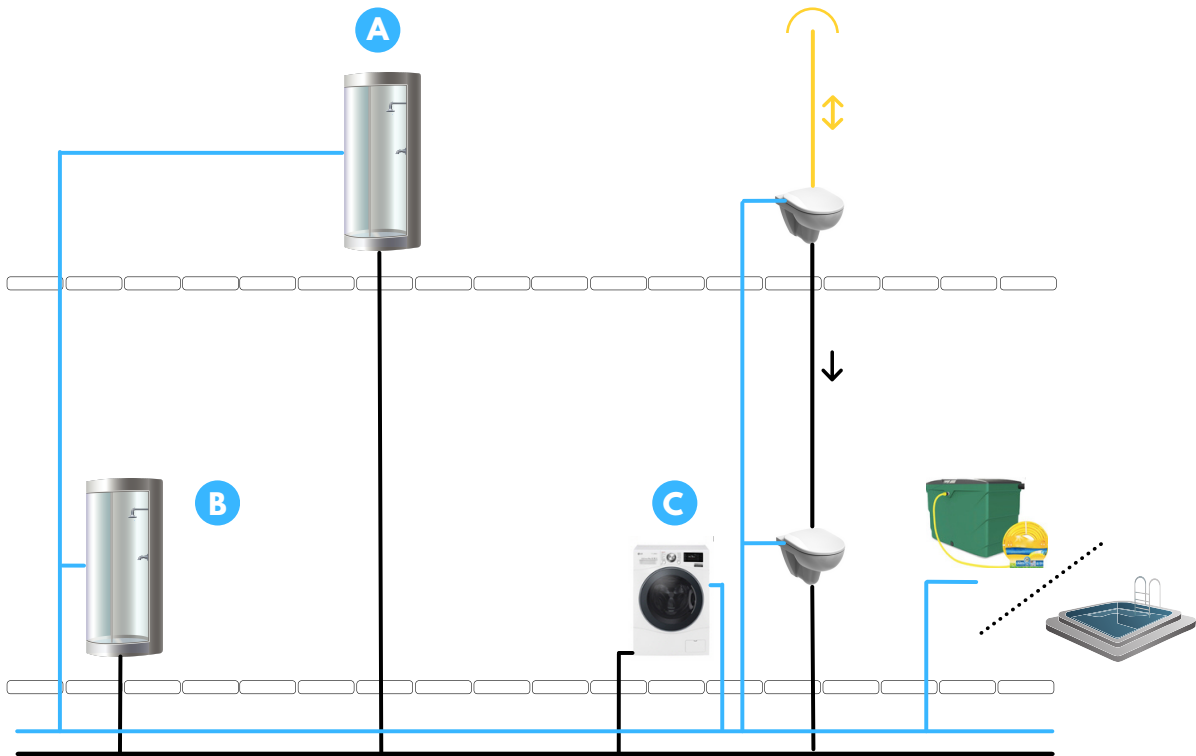
Next to the general information in this document, please work with the technical drawings on pages 7-9.



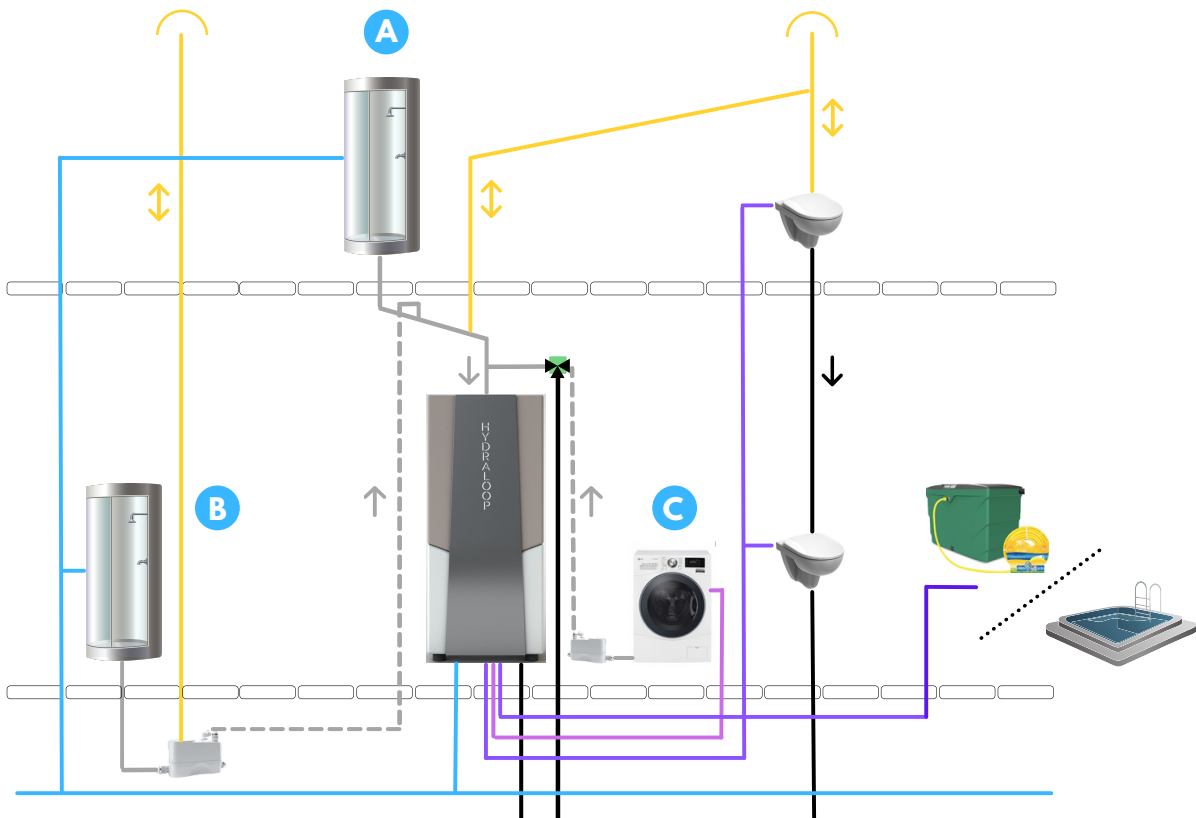
### Non-potable Water Identification

Draw off points for non-potable water must be identified with the word 'Non-potable water' or by a Non Potable water sign. Also label all recycled water pipes.

## CONVENTIONAL PLUMBING DIAGRAM



## RECYCLE READY PLUMBING DIAGRAM, PLUMBING OPTIONS



**A** **Hydraloop on lower floor – input by gravity**  
Greywater from the shower, bath or other sources flows into Hydraloop using gravity

**B** **Hydraloop on same floor – input via lift pump**  
Greywater from the shower, bath or other sources enters Hydraloop through lift pump

**C** **Optional: Hydraloop Washing Machine Water Recycle Option**  
50% of washing machine water enters the Hydraloop unit through Hydraloop-controlled WMR-valve

# CONNECTION OVERVIEW

## Greywater inlet for water from

- shower
- bath

H300  
H600

- tumble dryer
- air conditioning
- heat pump

H600

- washing machine (only with WMR option)

H300  
H600

See page 4

## Power/network connections

- power supply
- wifi internet connection

See page 5

## Recycled water output dedicated pipelines for

- toilet flushing
- washing machine
- garden irrigation or swimming pool

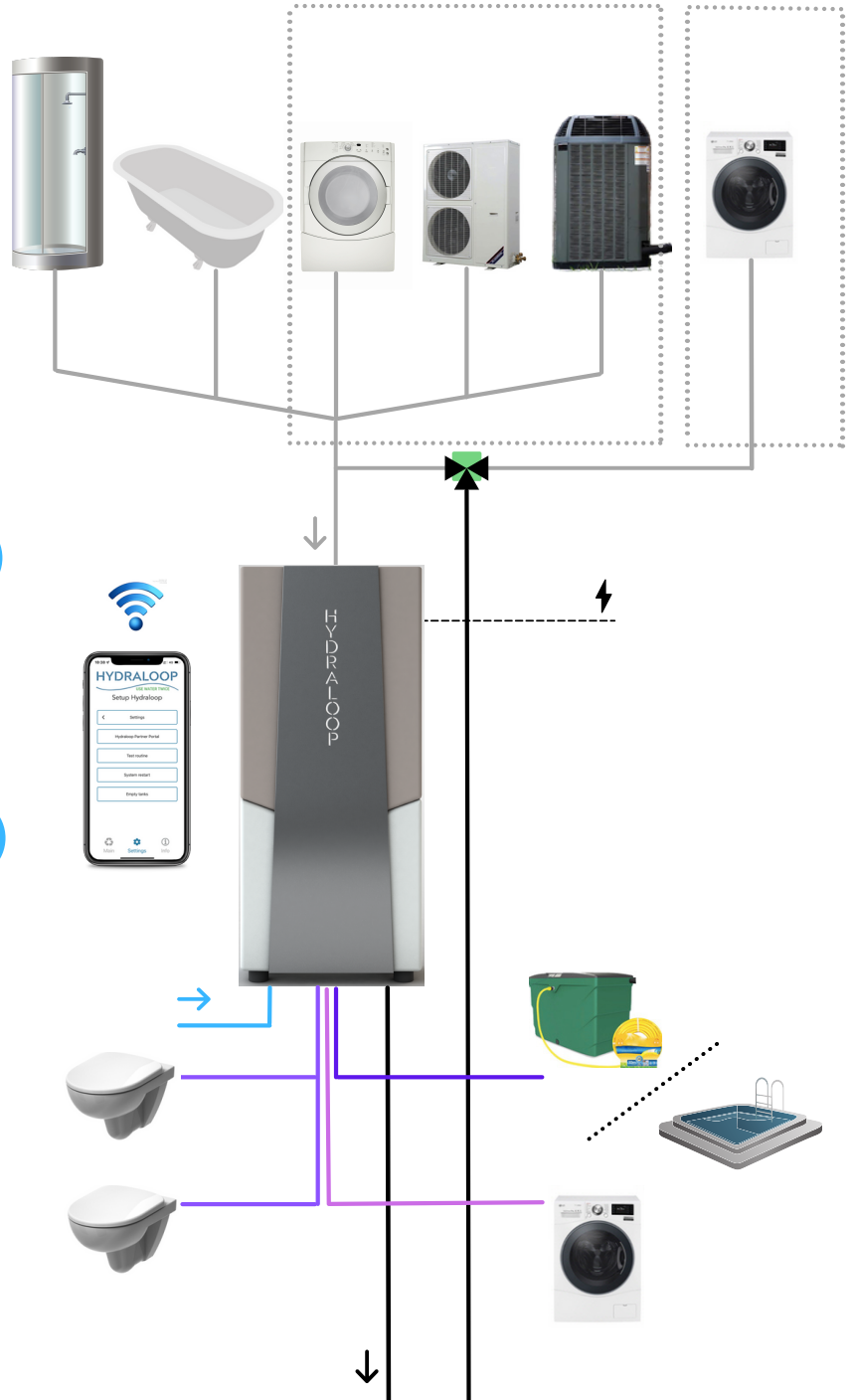
## Backup water inlet

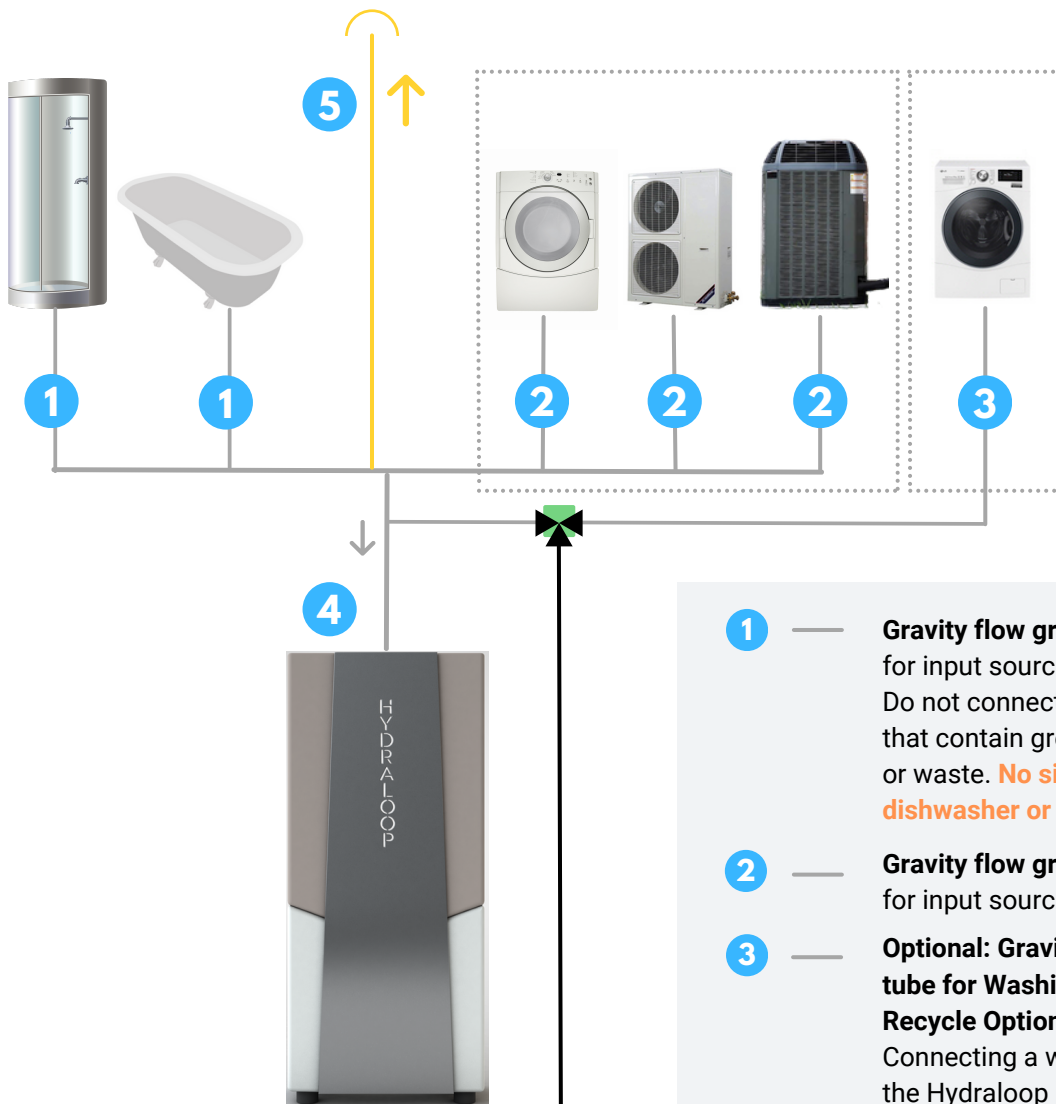
- tap water or filtered rainwater

## Wastewater outlet

- connection to sewer

See page 6





## CONNECTION DETAILS

### Greywater into Hydraloop

40mm | 1½" connections

### Use separate greywater pipes

Make sure that all greywater sources enter the Hydraloop unit from above. Ensure that all grey water connections are separated from black water.

### Connect greywater pipes into single pipe

Connect all incoming greywater pipes into one single pipe going into the inlet (40 mm | 1½") on top of the Hydraloop system.

### Input by gravity or lift pump

If your greywater input sources are located on a higher floor than the Hydraloop system, you can use gravity for the input water. In other circumstances, you'll need a lift pump. For lift pump requirements, see page 5.

See  
page 5

- 1** — **Gravity flow greywater tube** for input sources H300 & H600  
Do not connect water sources that contain grease, food scraps or waste. **No sink, kitchen sink, dishwasher or floor drain.**
- 2** — **Gravity flow greywater tube** for input sources H600
- 3** — **Optional: Gravity flow greywater tube for Washing Machine Water Recycle Option (WMR)**  
Connecting a washing machine to the Hydraloop is only possible if you specifically choose the WMR. You can connect just one washing machine to the Hydraloop unit.
- !**
- 4** — **Greywater inlet**
- 5** — **Ventilation**  
placed along the greywater tube to ensure proper ventilation and to help prevent air locks

Ensure that greywater input and sewage both have proper two-way ventilation. For more information, see schematic overview 'Recycle Ready Diagram' on page 2.

The ventilation for the greywater input should be positioned above all greywater sources and end outside the building. You can also combine it with the sewage ventilation.

# SYSTEM CONNECTIONS, POSITIONING, LIFT PUMP REQUIREMENTS



## INTERNET

- 1 Internet connection**  
Stable internet connection with working Wifi in the room.
- !** Make sure to have a working Wifi connection with a bandwidth of 2.4 GHz or 5 GHz prior to installation. It's not possible to connect an internet cable.

## POWER

- 2 Electricity (Hydraloop system)**  
100-120V (60Hz) or 200-240V, depending on region.

We advise to position the power outlet in the room close to the top or the side of the system.

## POSITIONING

### Room specifications

Greywater inlet and optional WMR should be positioned at least 210 cm, 6.10" above the ground.

The room temperature should be between 14-35° C | 57-95° F.

We recommend placing the Hydraloop unit in a laundry room, technical room, or garage.

At any time: avoid direct sunlight on the Hydraloop unit.

Allow 60 cm or 24" of space in front of the Hydraloop unit for maintenance access.

## LIFT PUMP REQUIREMENTS

Please feel free to install a lift pump that is locally available and matches the following criteria:

### Flow

maximum flow of appr. 100 liters per minute | 27 gallons per minute.



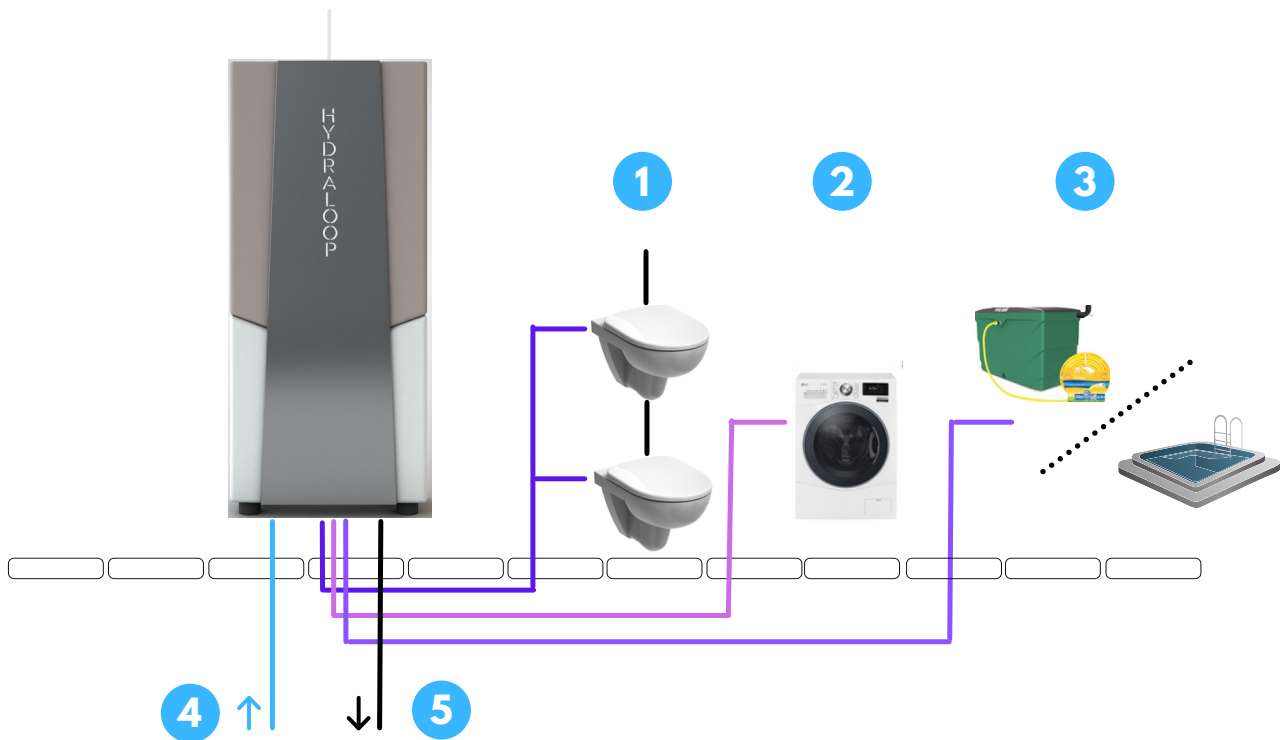
### Ventilation

Please ensure proper two-way ventilation by installing a ventilation stack that leads outside or by creating a relief line/overflow to the sewage.

### Examples of suitable lift pumps

DAB NovaBox 30/300  
Saniflo Sanivite

## CONNECTIONS FOR RECYCLED WATER, BACKUP WATER, WASTEWATER



### RECYCLED WATER

- 1 Toilet output**  
Recycled Hydraloop-water to toilets (pressure-controlled)
- 2 Washing machine output**  
Recycled Hydraloop-water to a washing machine (pressure-controlled)
- 3 Garden/pool output**  
Recycled Hydraloop-water to garden or pool (Hydraloop-controlled, unpressurized open connection to an external storage or swimming pool)

#### Recycled water connections

All output connections are ½" male thread. Prepare the plumbing in the wall behind the future location of the Hydraloop unit. Connect with flexible hose. For details, see 'Technical Drawings for your Plumber', page 8-9.

### BACKUP WATER

- 4 Backup water inlet**  
Connection to tap water or filtered rainwater supply

#### Backup water connection

½" male thread, minimum water flow of 20 liters | 5.3 gallons p/m, 1½-3 bar | 21-43 psi. If the pressure is higher, install a pressure regulator. If a rainwater pump is used, also install an expansion vessel.

### WASTEWATER

- 5 Wastewater output**  
Wastewater from Hydraloop to sewer (gravity)

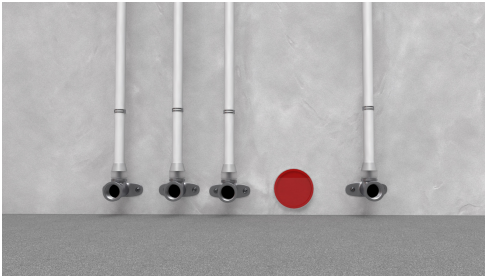
#### Wastewater connection

40mm | 1½" connection to sewer  
Sewer connection (minimum 50 mm | 2") with rubber sleeve underneath or behind the Hydraloop unit into the floor or wall.

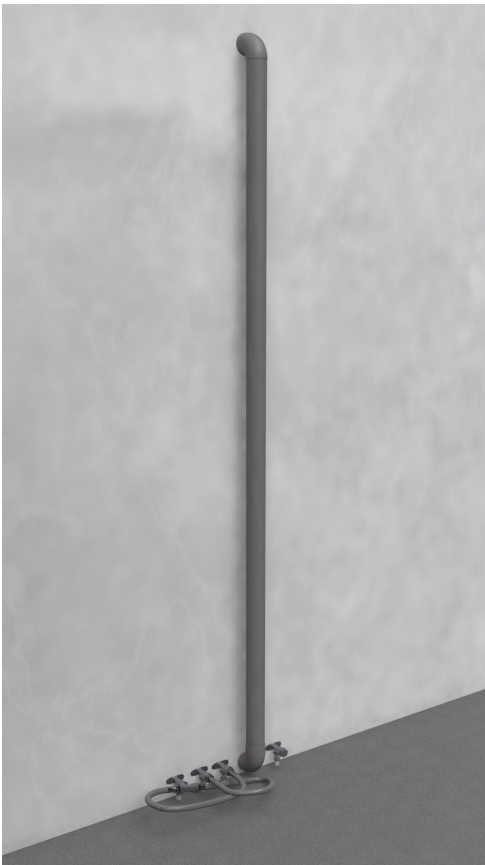
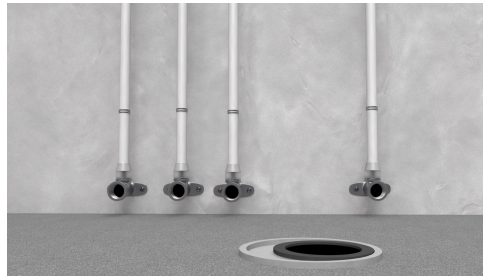
## WATER SUPPLY BEFORE INSTALLATION

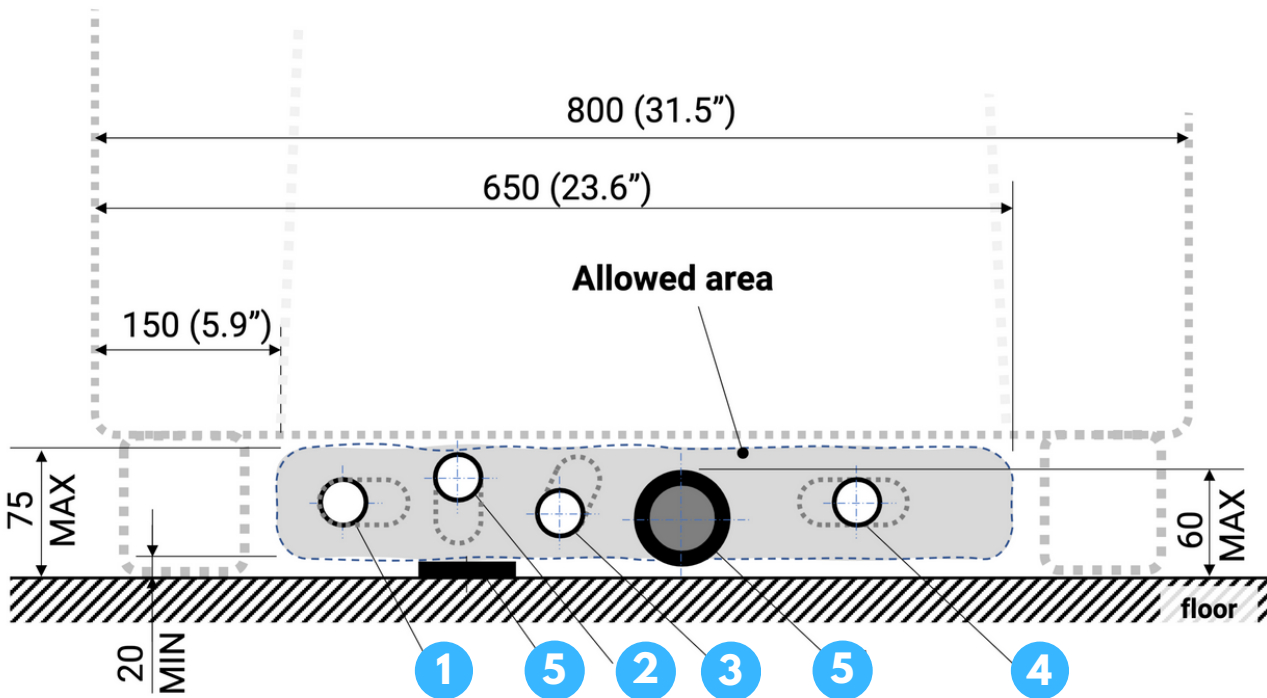
When the plumbing in your building is Recycle Ready, you can install a (temporary) bridge connection from the greywater input pipes to the sewer and from the backup water supply to the toilets and the washing machine. This enables you to use the showers, baths, toilets, and washing machine as usual, until a water recycling system like Hydraloop is installed.

### IN THE WALL



### IN THE FLOOR





**Front view - H300 / H600**  
All dimensions in mm (inches)

- 1 Backup water**  
Connection to tap water or filtered rainwater supply
- 2 Toilet output**  
Recycled Hydraloop-water to toilets (pressure-controlled)
- 3 Washing machine output**  
Recycled Hydraloop-water to one washing machine (pressure-controlled)
- 4 Garden/pool output**  
Recycled Hydraloop-water to garden or pool (Hydraloop-controlled, pressurized)
- 5 Wastewater output**  
Wastewater from Hydraloop to sewer

option 1: in the wall  
option 2: in the floor

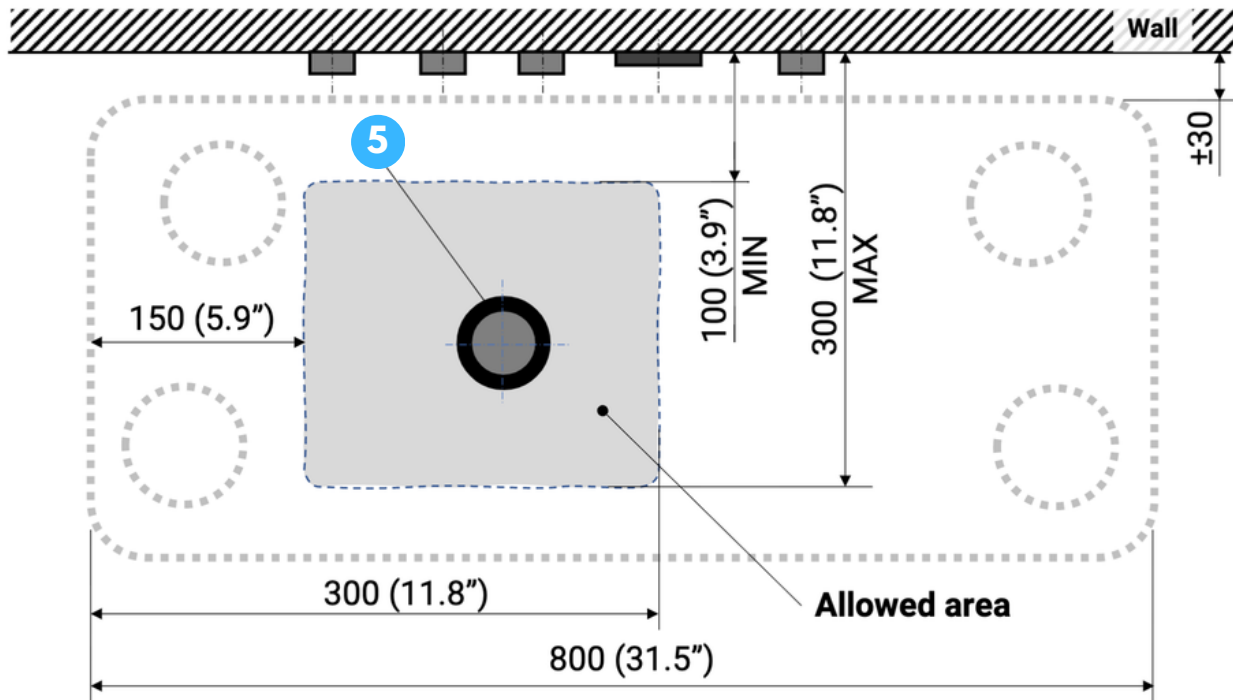
See  
page 7

**Backup water**  
½" male thread, the minimum water flow of 20 liters | 5.3 gallons p/m, 29 psi/2.2 bar. If the pressure is higher (max. 55 psi/4 bar), install an expansion vessel and a 50-micron mash filter.

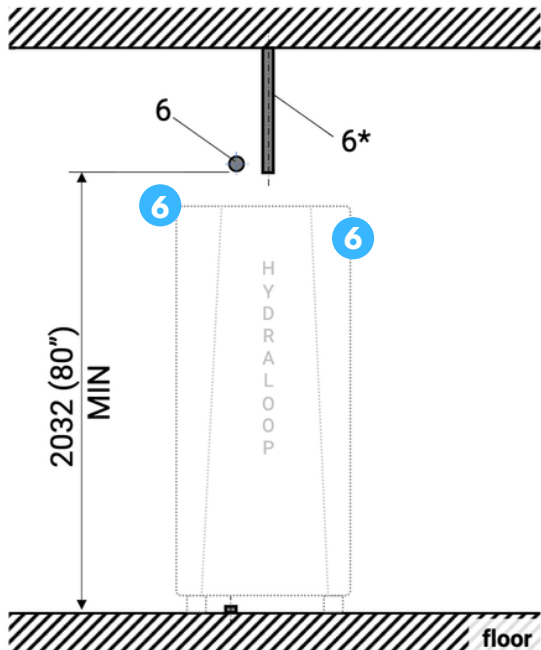
**Toilet, washing machine, and garden/pool output**  
All output connections are ½" male thread – Prepare the plumbing in the wall behind the future location of the Hydraloop unit. Connect with flexible hose.

**Wastewater output**  
40mm | 1½" connection to sewer – Sewer connection (75 to 50mm | 3" to 2") with rubber manchet underneath or behind the Hydraloop unit into floor or wall.





**Top view - H300**  
All dimensions in mm (inches)



**Front view - H300 / H600**  
All dimensions in mm (inches)

- 5 Wastewater output**  
Wastewater from Hydraloop to sewer  
option 1: in the wall  
option 2: in the floor
- 6 Greywater inlet**  
option 1: (left) in the wall  
option 2: (right) vertical, from the ceiling

## H300

**Capacity**

300 liters | 80 gallons

**Dimensions**

80 cm wide, 34 cm deep, 187 cm high |  
31 ½" wide, 13'4" deep, 74" high

**Voltage**

Versions for 100-120V (60Hz) or 200-240V (50 Hz), 24 Volt internal

**Power consumption**

On average: 180 kWh/year per system

**Noise Level**

± 44 dB

**Greywater input sources**

- shower
- bath
- washing machine (only with WMR)

## H600

**Capacity**

600 liters | 160 gallons

**Dimensions**

80 cm wide, 69 cm deep, 187 cm high |  
31 ½" wide, 27,5" deep, 74" high

**Voltage**

Versions for 100-120V (60Hz) or 200-240V (50 Hz), 24 Volt internal

**Power consumption**

On average: 350 kWh/year per system

**Noise Level**

± 46 dB

**Greywater input sources**

- shower
- bath
- tumble dryer
- air conditioning
- heat pump
- washing machine (only with WMR)

